

Customer :

customer

Customer part :

customer part

Comment :

Comment

S1=2.9

S2=3.33

Tmax=465

Tp S2=504.0

PI=0.47

HI=84

Sample =1726.80

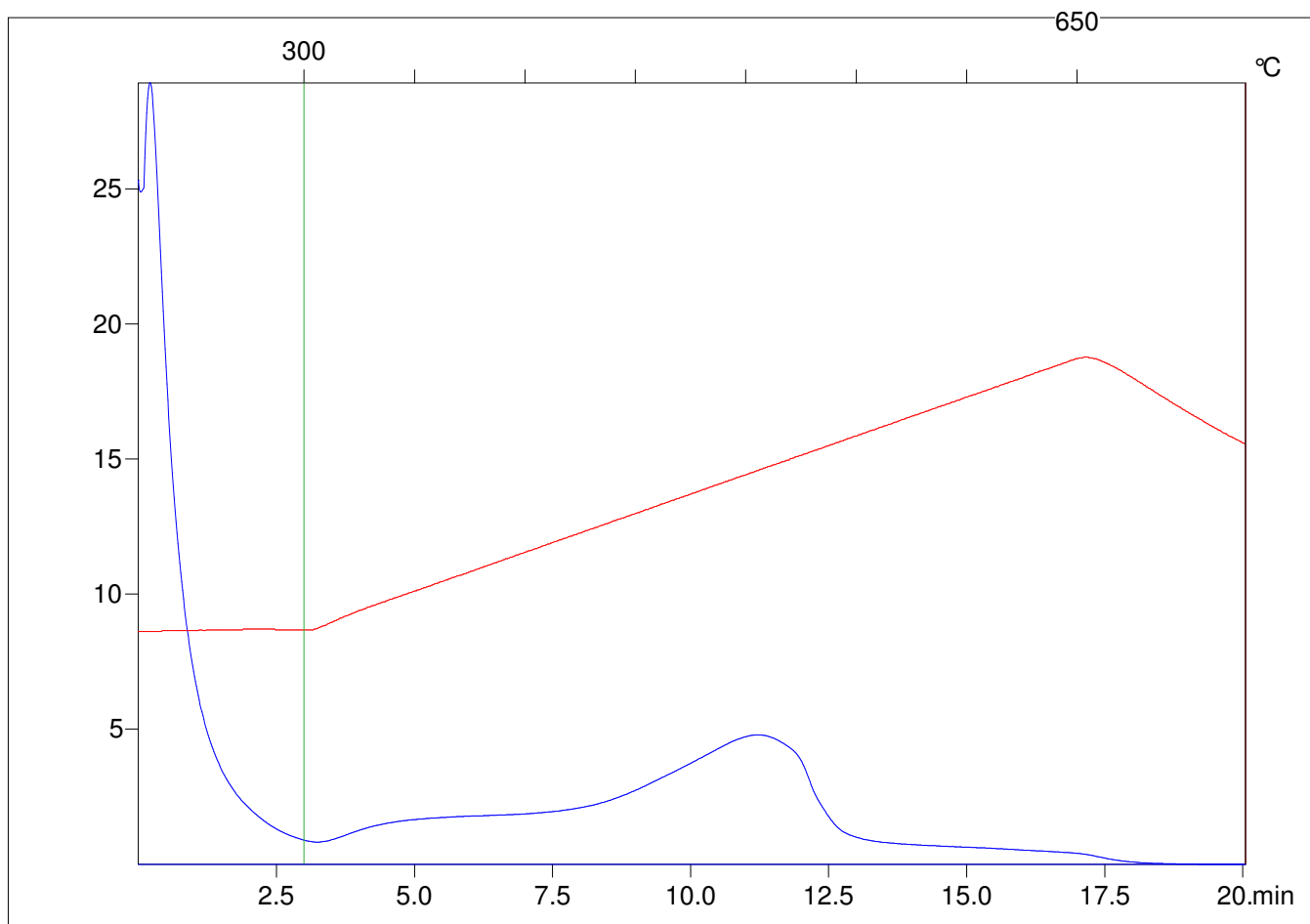
Method =Bulk Rock

Cycle=Basic

KFID(10*9)=1444

Qty =70.8

TOC=3.98



C:\VINC\PK2_1792\PK042.R00 : FID pyrolysis graphic

State

Pyro Status

Oxi Status